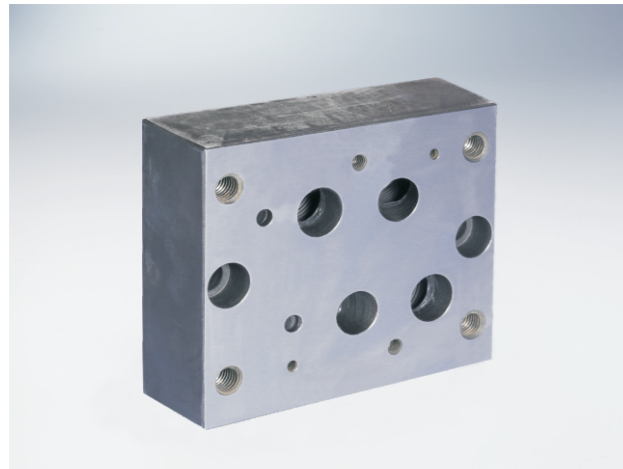


# 标准油路块 D08SP



## 型号说明

HY\* D08 SP \* \* / 10

A 铝 7A04 最高压力20.7MPa  
D 钢 45# 最高压力31.5MPa

25 25mm 通径

过渡块

油口位置  
SO 侧面油口  
B 底面油口

设计序列号

P,A,B,T油口螺纹				X,Y油口螺纹
12P	3/4"NPT(Z)			1/4"NPT(Z)
16P	1"NPT(Z)	20P	1-1/4"NPT(Z)	1/4"NPT(Z)
16S	SAE-16	20S	SAE-20	SAE-6
16B	1"BSP(G)	20B	1-1/4"BSP(G)	1/4"BSP(G)
16M	M33X2	20M	M42X2	M14X1.5

## 外形尺寸

尺寸	A	B	C	D	E	F	G	H	I	J	K
*D08SPSO12P, *D08SPSO16*	2.00 [50.8]	6.13 [155.7]	4.50 [114.3]	1.19 [30.2]	2.53 [64.3]	4.53 [115.1]	1.00 [25.4]	1.00 [25.4]	0.50 [12.7]	3.53 [89.7]	5.62 [142.7]
*D08SPST12P, *D08SPST16*	2.00 [50.8]	6.13 [155.7]	4.50 [114.3]	1.19 [30.2]	2.53 [64.3]	4.53 [115.1]	1.00 [25.4]	1.00 [25.4]	0.50 [12.7]	3.53 [89.7]	5.62 [142.7]
*D08SPSO20*	3.00 [76.2]	6.50 [165.1]	5.00 [127.0]	1.31 [33.3]	2.33 [59.2]	4.77 [121.2]	1.13 [28.6]	2.38 [60.3]	0.50 [12.7]	3.72 [94.5]	6.00 [152.4]
*D08SPSO20M	4.00 [101.6]	6.50 [165.1]	5.00 [127.0]	1.38 [34.9]	2.33 [59.2]	4.77 [121.2]	1.63 [41.3]	3.13 [79.4]	0.50 [12.7]	3.72 [94.5]	6.00 [152.4]
*D08SPB16B	1.50 [38.1]	6.13 [155.7]	4.63 [117.6]	0.50 [12.7]	3.53 [89.7]	5.62 [142.7]	2.31 [58.7]	3.44 [87.4]	---	1.19 [30.2]	1.19 [30.2]
*D08SPB12P, *D08SPB16[M,P,S,T]	1.50 [38.1]	6.13 [155.7]	4.63 [117.6]	0.50 [12.7]	3.53 [89.7]	5.62 [142.7]	2.31 [58.7]	3.44 [87.4]	---	1.19 [30.2]	1.19 [30.2]
*D08SPB20*	2.00 [50.8]	7.63 [193.8]	5.00 [127.0]	0.38 [9.7]	4.28 [108.7]	7.25 [184.2]	0.38 [9.7]	3.63 [92.2]	4.63 [117.6]	1.44 [36.6]	1.75 [44.5]

# 标准油路块 D08SP

## 外形尺寸

旁路油口过渡块  
阀安装螺纹:美制 0.50-13x1.19DP  
公制 M12-1.75mm ISO 6Hx[30.2]DP

视图关系

尺寸	L	M	N	O	P	Q	R	S	T	U
*D08SPSO12P, *D08SPSO16*	2.25 [57.2]	3.38 [85.9]	1.56 [39.7]	3.59 [91.2]	4.94 [125.5]	---	---	---	---	---
*D08SPST12P, *D08SPST16*	2.25 [57.2]	3.38 [85.9]	---	3.59 [91.2]	4.94 [125.5]	1.66 [42.1]	3.38 [85.9]	---	---	---
*D08SPSO20*	2.50 [63.5]	3.63 [92.2]	1.73 [43.9]	4.17 [105.9]	5.19 [131.8]	---	---	---	---	---
*D08SPSO20M	2.50 [63.5]	3.63 [92.2]	1.73 [43.9]	4.17 [105.9]	5.13 [130.2]	---	---	---	---	---
*D08SPB16B	3.44 [87.4]	3.44 [87.4]	1.53 [38.9]	5.16 [131.0]	0.97 [24.6]	2.47 [62.7]	3.66 [92.9]	4.59 [116.7]	1.25 [31.8]	3.38 [85.9]
*D08SPB12P, *D08SPB16[M,P,S,T]	3.44 [87.4]	3.44 [87.4]	1.66 [42.2]	4.94 [125.5]	1.19 [30.2]	2.59 [65.8]	3.53 [89.7]	4.47 [113.5]	1.25 [31.8]	3.38 [85.9]
*D08SPB20*	3.25 [82.6]	3.56 [90.4]	1.84 [46.7]	6.00 [152.4]	1.63 [41.3]	3.31 [84.1]	4.31 [109.5]	5.78 [146.8]	1.44 [36.6]	3.56 [90.4]